



INDUSTRIAL AND ENGINEERING TECHNOLOGY Co., Limited



INDUSTRIAL AND ENGINEERING TECHNOLOGY Co., Limited

PRODUCT MANUAL



Renowned Brand In The
Casting Industry

INDUSTRIAL AND ENGINEERING TECHNOLOGY Co., Limited
Add: 8 Floor, China Hong Kong Tower, 8-12 Hennessy Road,
Wan Chai, Hong Kong
E-mail: business@iet-hongkong.com
WhatsApp: +852 5473 6914





“

SPECIALIZED IN THE DEVELOPMENT, MANUFACTURE AND DISTRIBUTION OF INDUSTRIAL PRODUCTS USED IN TUNNELS AND UNDERGROUND MINING.

”

Our Business Segments



Mining

Ground Support Products for Mining – We are your Partner for more Safety in Underground Mining

As a pursue excellence producer and supplier of rock bolts and chemical construction materials for Mining, we are offering you reliable solutions for more safety and efficiency. This way, we offer you individual customized solutions that are a perfect match for your respective application area. We develop and produce ground support products that enhance safety during shaft sinking, the excavation of new horizontal drifts or the rehabilitation of shafts in mining. The installation of our high quality rock bolts and the use of our chemicals in Mining increase productivity, reduce costs and protect human lives.



---In Underground Mining, we offer the following Services to you:

We design and develop flexible and safe ground support products
 We produce in house in accordance with exacting quality standards and norms
 We are continuously monitoring the quality of our work – both internally and externally
 We ensure punctual delivery – anytime and anywhere
 Challenge us! Customized solutions are our specialty

---Rock Bolts – flexible Underground Stabilization

We are offering you a wide variety of rock bolts consisting of steel bars, strand and hollow bars as well as GRP glass fiber reinforced systems. Consequently, we can always provide you with the optimum solution for the individual requirements of your mine.

---Resin and Cement Cartridges – efficient Load Transfer

Is your driving section located in fragmented, unstable rock? No problem: Our rock anchors can be flexibly combined with resin and cement cartridges that ensure immediate load transfer and therefore immediate safety.

---Passive Ground Support Products – flexible Adaptation to the Excavation Geometry

Do you require passive support for immediate stabilization? Our range of support profiles, mesh and rock bolt straps can be flexibly adjusted to the respective conditions on site. All of our systems have proven themselves in use for decades.

Tunneling

Ground Support Products for Tunneling – safe Heading

We supply our high quality Tunneling products and systems to clients to make the Underground industry safer and to improve your working environment.

Do you require an efficient solution from a single source that is tailored to your needs? Talk to us: business@iet-hongkong.com

We adjust our products and systems to suit your needs and offer you complete solutions for your individual requirements in Tunneling. We offer a complete product line of ground support systems that is continuously strengthened by technical service and innovative development. You can profit from this transfer of technology every day.

---System Solutions for Tunneling – well-proven Systems over Decades

As a system supplier, we develop, produce and supply the entire product line of excavation and ground support systems for Tunneling. With a large variety of anchors, rock bolts, passive supports, we are committed to the safety of your Tunneling project. We are certified according to ISO 9001 and dispose of fully developed logistics that fulfil the highest quality standards.

---We offer the following Services for Tunneling:

We design and develop technically sophisticated Tunneling Systems
 We produce in house and ensure the availability of our systems and our special equipment anytime and anywhere
 We offer a wide product range of self-drilling ground support products
 We guarantee punctual delivery
 Our competent and experienced engineers working in our technical departments implement customized special solutions just in time
 On demand, we will train your personnel or provide installation supervision
 We offer technical planning with integrated customer support

---Anchors and Rock Bolts – flexible Stabilization Underground

We offer a wide variety of anchors and rock bolts for Tunneling. The following products form part of our comprehensive range of anchors:

Mechanical Anchors, Resin and Rebar Rock Bolts
 Friction Stabilizers
 Expandable Friction Bolts
 Self-Drilling Friction Bolts
 GRP Anchors and Rock Bolts for high quality ground support in Tunneling
 With these products, we can always provide you with the optimum solution for the individual requirements of your Tunneling project.

---Passive Support – flexible Adaptation to the Excavation Geometry

Do you require a passive ground support method for immediate stabilization? Our variety of Lattice Girders, support profiles, rock bolt mats and straps can be flexibly adjusted to requirements on site. In highly converging rock mass conditions, Lining Stress Controllers (LSC™) ensure controlled stress release.

---Accessories, Equipment and Service from a Single Source

We are a One Stop Shop provider. Of course, this also includes the matching high-quality accessories for all our products and systems as well as equipment for fast and easy installation. Our service team of experienced application engineers will be glad to support you with all general and product related questions regarding our ground support products.



INDUSTRIAL AND ENGINEERING TECHNOLOGY Co., Limited

CULTURE

While INDUSTRIAL AND ENGINEERING TECHNOLOGY Co., Limited prides itself on being able to evolve with the times in line with the wishes and needs of the industry, our values remain timeless. These values define how we do business worldwide. We are committed to providing reliable, customized solutions to enhance our customers' productivity.

OUR VALUES

We are with you throughout the entire process from initial enquiry through to after sales servicing and follow up.

Everyone takes ownership for their work to ensure satisfaction and accountability.

We take an innovative approach to business constantly and passionately searching for new and improved ways to add value to our clients.

We encourage a high level of respect and care for employees, clients, suppliers and local communities.

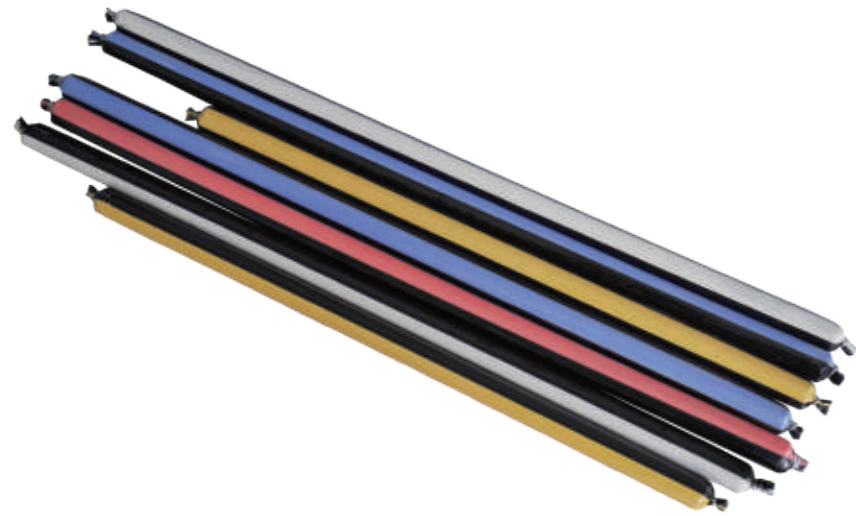
APPLICATION SCENARIOS



ANCHOR INSTALLATION



RESIN CAPSULE



STRENGTH

Item	Requirements
Compressive Standard	>60 MPa
Service ambient temperature	>35 MPa
Storage period (<25℃, month)	≥3

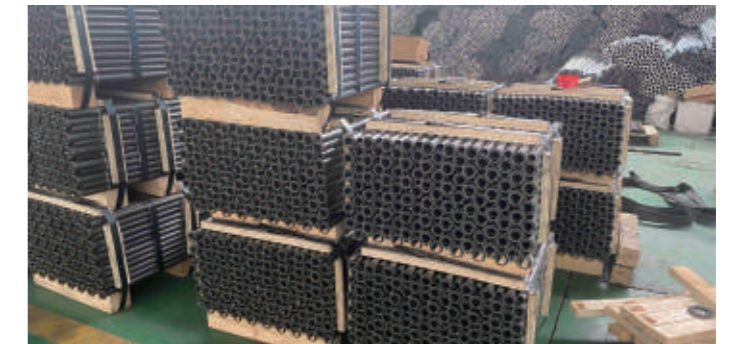
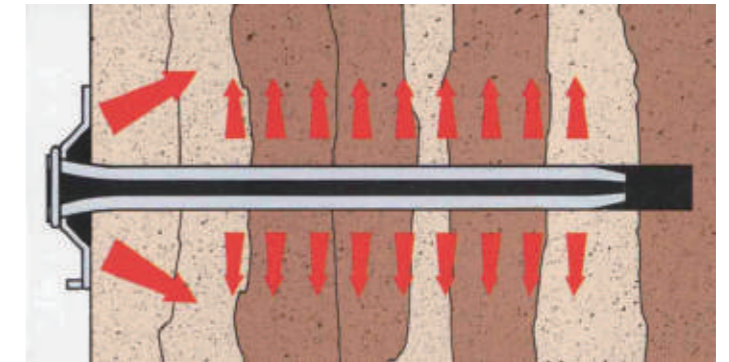
Code name	Specifications (mm*mm)	Weigh (g/Branch)	Applicable aperture(mm)	Branch / box
2335	Φ23*350	310±20	Φ28±2	50
2360	Φ23*600	530±30	Φ28±2	40
25180	Φ25*900*2	1900±100	Φ28±2	12
25240	Φ25*1200*2	2560±110	Φ28±2	10
2645	Φ26*450	520±30	Φ28±2	30
26240	Φ26*1200*2	2700±120	Φ28±2	8
2835	Φ28*350	460±30	Φ32±2	40
2850	Φ28*500	660±30	Φ32±2	40
28240	Φ28*1200*2	3220±130	Φ32±2	7
30200	Φ30*1000*2	3000±120	Φ35±2	7
30260	Φ30*1300*2	4000±150	Φ35±2	7
3530	Φ35*300	610±40	Φ42±2	40
3537	Φ35*370	750±40	Φ42±2	40

Note: anchoring agent of other specifications can be produced when customers have special needs: Within the range of 18~40mm in diameter and 200~1500mm in length.

USAGE METHOD

1. According to the designed hole diameter anchoring length and rod diameter to choose the appropriate type of anchoring agent specifications.
2. Drill holes into the calibrated anchorage matrix.
3. Remove the floating dust in the borehole and install anchorage agent.
4. Use the stirring machine to drive the metal rod body to the bottom of the hole while stirring. The stirring time should be less than the anchorage gel time.
5. Load-bearing capacity after complete curing





OVERVIEW

Friction bolt is made of a steel with exceptional formability properties, ensuring a safe and reliable performance in different rock conditions.

Immediate Support: The anchors provide instant stabilization as they are driven into the rock, creating friction that holds the surrounding material in place.

Efficiency: The straightforward installation process reduces downtime and increases productivity in mining operations.

Frictional Resistance: They generate friction along the entire length of the anchor when inserted into a hole, providing immediate support.

-The Underground Friction Bolt is manufactured from high strength steel tube which has a slot along its entire length. A ring, or collar, is welded on the outer end to hold a domed plate to the rock surface.

-The 33mm Friction Bolt is suitable for installation with hand held rock drills (stoppers/drifters).

-Friction bolts can be load tested by fitting a special ring to the bolt prior to its installation. Pull tests can then be conducted with a hollow ram hydraulic jack.

-Further corrosion protection can be provided by hot dip galvanizing.

PRODUCT PARAMETERS

Ready for all underground work				
Bar Diameter [mm]	33	39	42	47
Min. yield strength [kN]	78	88	95	125
Steel thickness [mm]	2.5	2.5	2.5	3
Min. ultimate tensile load [tons]	7	8	10	12
Min Breaking Strength [kN]	100	115	120	160
Hole diameter range [mm]	29-32	35-38	38-41	42-45
Elongation	18%	18%	18%	18%





HOLLOW (GROUTING) ANCHOR ROD



OVERVIEW

Hollow grouting anchor rods ensure that the rod body is fully grouted, fully leveraging the anchoring effect of the anchor rod. After excavation of the rock mass, it can immediately provide support, effectively protecting the inherent strength of the rock mass, preventing loosening and deformation of the surrounding rock, and enhancing the stability of rock and soil engineering. The rod body is sufficiently encapsulated with grout, greatly improving its ability to resist corrosion, and demonstrating excellent durability.

DRILL BIT

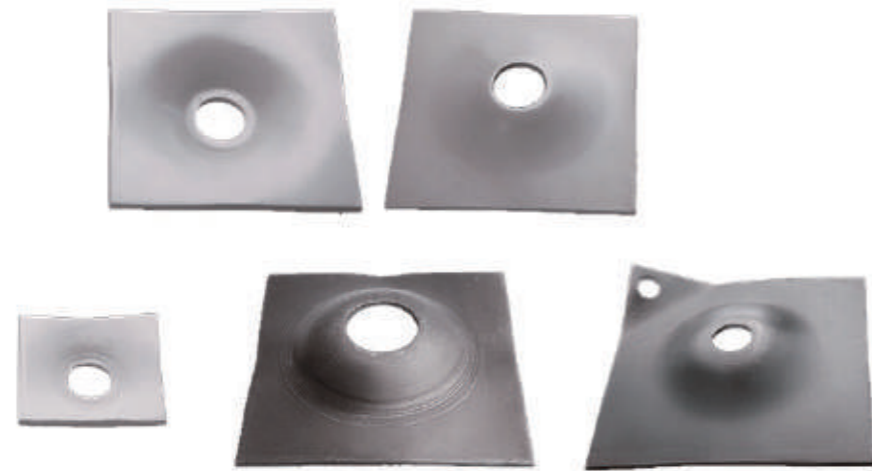


Self Drilling Hollow Bar	Outside Diameter (mm)	Cross Sectional Area (mm)	Ultimate Load (kN)	Load at 0.2% Yield (kN)	weight (kg/m)	Material	Elongation %	Thread Type	Length (m)
T30									
T30/11	30	446	320	260	3.50	S355/ C45/ S460NH	A _{gt} ≥2.5% A _{gt} ≥5%	T thread T international Left hand	1,2,3,4,5 6,7,8
T30/14		407	320	260	3.20				
T30/16		331	260	220	2.60				
T40									
T30/16	40	917	660	525	7.2	S355/ C45/ S460NH	A _{gt} ≥2.5% A _{gt} ≥5%	T thread T international Left hand	1,2,3,4,5 6,7,8
T30/16		853	660	525	6.70				
T30/20		713	540	430	5.60				
T52									
T52/26	52	1146	929	730	9.00	S355/ C45/ S460NH	A _{gt} ≥2.5% A _{gt} ≥5%	T thread T international Left hand	1,2,3,4,5 6,7,8
T73									
T73/35	73	1910	1865	1430	15.00	S355/ C45/ S460NH	A _{gt} ≥2.5% A _{gt} ≥5%	T thread T international Right hand	1,2,3,4,5 6,7,8
T73/53		1615	1258	975	13.90				
T76									
T76L	76	1528	1200	1000	12.00	S355/ C45/ S460NH	A _{gt} ≥2.5% A _{gt} ≥5%	T thread T international Left hand	1,2,3,4,5 6,7,8
T76N		1911	1600	1200	15.00				
T76S		2420	1900	1500	19.00				
T103									
T103/51	103	5682	3460	2730	44.60	S355/ C45/ S460NH	A _{gt} ≥2.5% A _{gt} ≥5%	T thread T international Right hand	1,2,3,4,5 6
T103/78		3140	2244	1770	25.30				



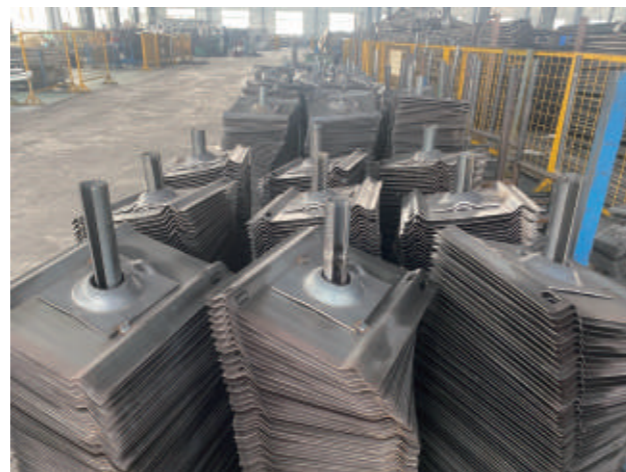
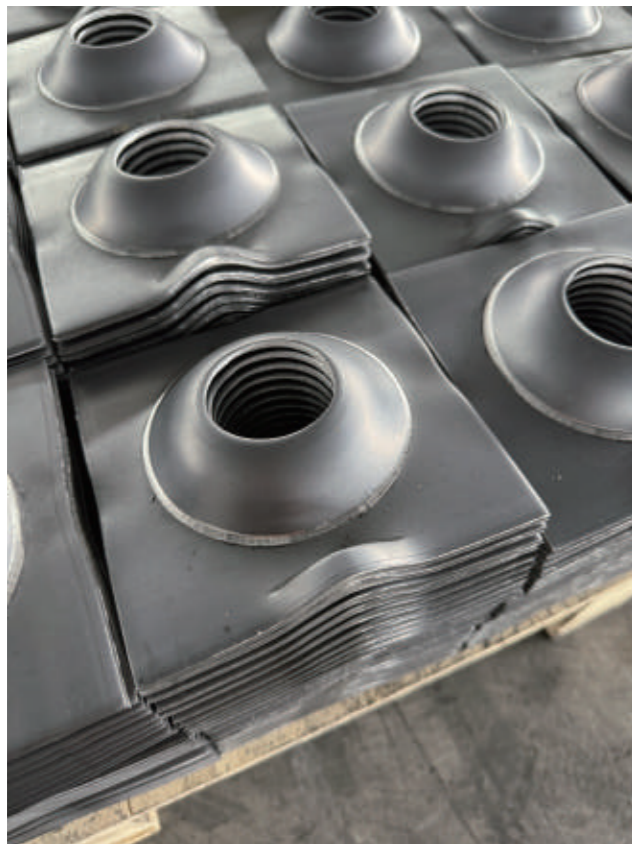


ANCHOR PLATE



ANCHOR BOLT PLATE

- Domed Plates are compatible with DSI Underground Rock Bolts fitted with matching dome balls.
- Domed Plates are complimentary to the Dome Ball and overcome the problems of surface angularity. They allow the development of a good torque tension ratio.
- The Domed Plate and Dome Ball assembly provides up to 18° angle of tilt.
- Other sizes available by negotiation.
- Grout holes can be provided on domed Plates.
- Corrosion protection may be provided by hot dip galvanizing.



EXPANSION SHELL



OVERVIEW

Expansion Shell Rock Bolts

Expansion Shell Rock Bolts are crucial elements in stabilizing rock formations in various industries, from mining to civil engineering.

They are used to reinforce and support rock structures to prevent them from collapsing or shifting, which can pose a serious threat to workers and structures.

There are several types of rock bolts, each designed for specific applications. Here are some common rock bolt applications and types you should know.

These rock bolts consist of a steel tube and an expansion shell that is inserted into a drilled hole in the rock. A cone-shaped wedging expansion shell is connected to the tube and expanded by using a mechanical tool or hydraulic pressure. This creates a compressive force that anchors the bolt into the rock, providing additional support and stability.

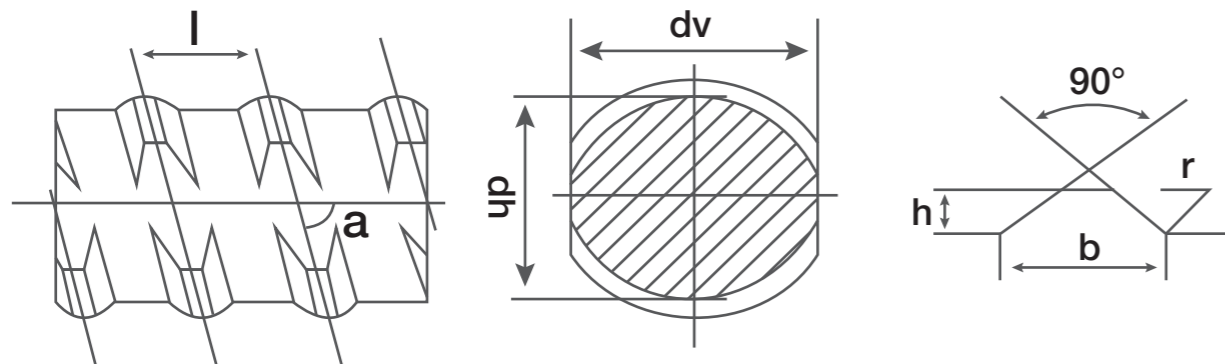


HIGH STRENGTH SCREW THREAD BAR



SURFACE

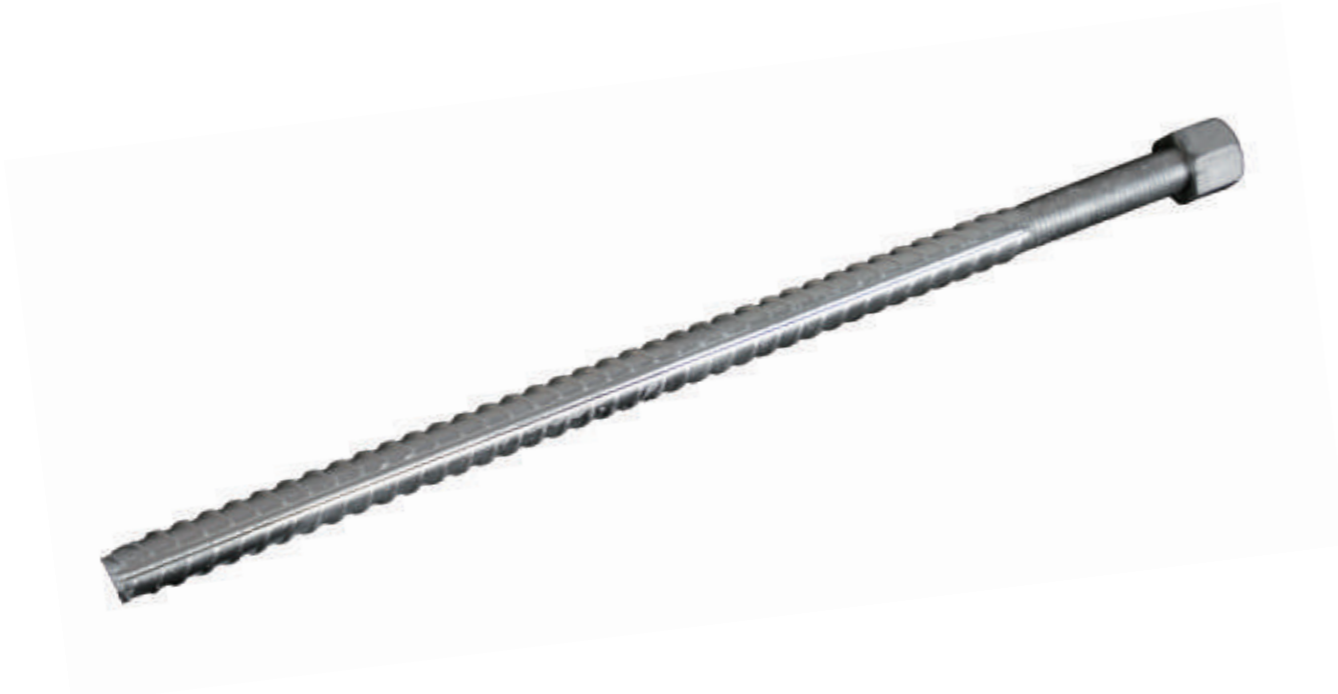
Hot dipped galvanized available;
Epoxy coated available;
Anti-rust processing available.



PRODUCT FEATURES

1. Bolts have high-strength stress and good supporting ability.
2. Installation is quick and easy.
3. Use with resin agent to obtain permanent support.
4. Used in areas with high stress and large deformation.
5. The price is low, and it is widely used in various roadway projects.

Diameter /mm	dh/mm		dv/mm		h/mm		b/mm		l/mm		r/mm	a
	size	Thread	size	Thread	size	Thread	size	Thread	size	Thread		
15	14.7	±0.2	14.4	±0.5	1.0	±0.2	4.2	±0.3	10.0		0.5	78.5°
20	20.0	±0.4	20.0	±0.4-0.8	1.3	±0.3	4.8	±0.5	10.0	±0.2	1.2	80.5°
25	25.0		25		±0.4-0.8		1.6		6.0		12.0	1.5
32	32.0	32		2.0	±0.4	7.0	16.0		2.0	81.5°		
36	36.0	36		2.2	±0.4	8.0	18.0		2.5	81.5°		
40	40.0	±0.5	40.0	±0.5-1.2	2.5	±0.5	8.0		20.0	±0.3	2.5	81.5°
50	50.0	50.0			3.0	±0.5	9.0	24.0		2.5	81.5°	
63.5	63.5	63.5			3.0	±0.6	12.0	22.0	±0.4	2.5	84°	



PRODUCT INTRODUCTION

The Solid Deformed Bolt is manufactured from hot rolled reinforcing bar having rib deformations generally in a "herringbone" form.
 The Solid Deformed Bolt has a standard thread roll formed at one end.
 The solid deformed bolt is usually fully encapsulated with resin anchors, but can be effectively used with cementitious grouts.
 Corrosion protection may be provided by



TECHNICAL PARAMETERS OF ANCHOR ROD BODY AND SUPPORTING TRAY



Type (MPa)	Diameter (mm)	Yield Strength(kN)	Tensile Strength(kN)	Minimum Percentage elongation (%)	Plate Size (mm)	Plate strength (kN)
MG335	16	62.8	91.9	15	150*150*5.5	90.0
	18	82.8	121.1	15	150*150*8	180.0
	22	119.3	174.5	15	150*150*8	180.0
MG500	18	123.5	163.1	15	150*150*8	180.0
	20	153.3	202.3	15	150*150*8	180.0
	22	177.9	234.8	15	150*150*10	260.0
HRB500	20	157	265	15	150*150*10	260.0
	22	190	340	15	200*200*10	310.0

PRODUCT FEATURES

Coal mine anchor rod manufacturing equipment is a high-tech production equipment designed specifically for the coal mining industry. It integrates multiple advanced technologies such as precision machining, automation control, intelligent detection, and efficient material processing. This equipment is equipped with a precise CNC system, which can precisely control the forming, cutting, threading, heat treatment, and surface treatment of anchor rods, ensuring that each anchor rod meets strict coal mine safety standards.





HOW TO WORK

When the bolt is used in the hole, the bush with a hole is connected with a chuck of a high-pressure water pump. Start the pump and inject the water into tube, the folded wall of bolt is forced to expand. When the pump reaches a standard pressure, the wall of bolt holds onto the strata and creates a big friction strength to support.



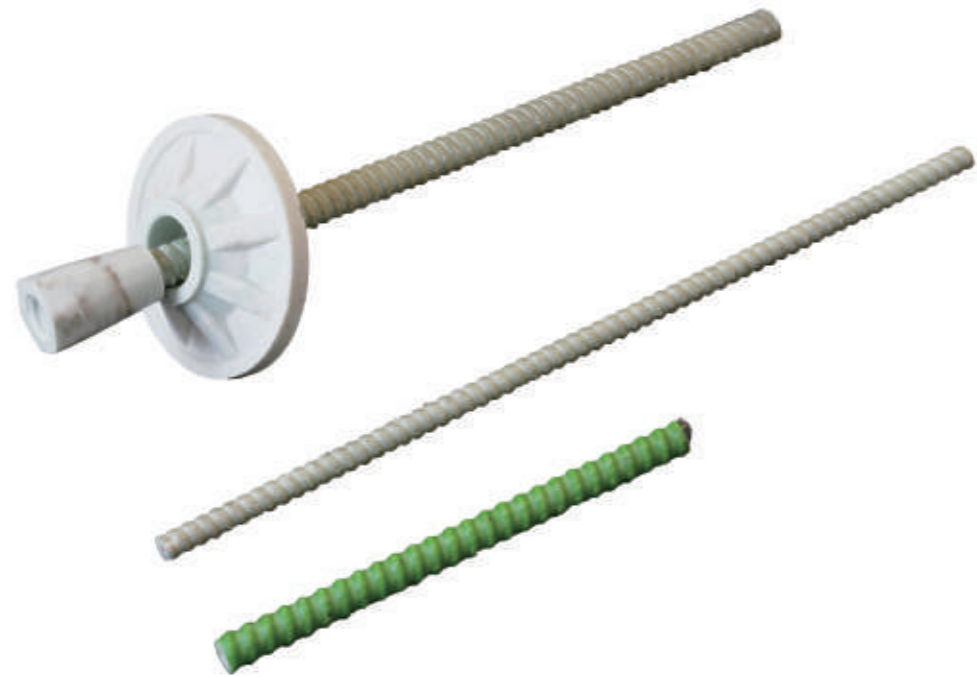
Thus, a safety and stable support system is formed.

STRENGTH

Expandable Friction Bolt is made by high strength welded tube folded itself and welded to seal at both end of bolt. Expandable Friction Bolt is also named swellex , hydra bolt, Inflatable bolt.

Item No.	Bolt Diameter	Steel thickness	Original Tube Diameter	Bushing Head Diameter	Upper Bushing Diameter	Min Breaking Load	Expansion Pressure	Minimum Elongation
ZFGK120	28mm	3mm	41mm	30/36mm	28mm	110KN	300bar	10%
ZFGK160	38mm	3mm	54mm	41/48mm	38mm	150KN	240bar	10%
ZFGK240	38mm	3mm	54mm	41/48mm	38mm	230KN	300bar	10%





OVERVIEW

Compare with steel Rockbolt:

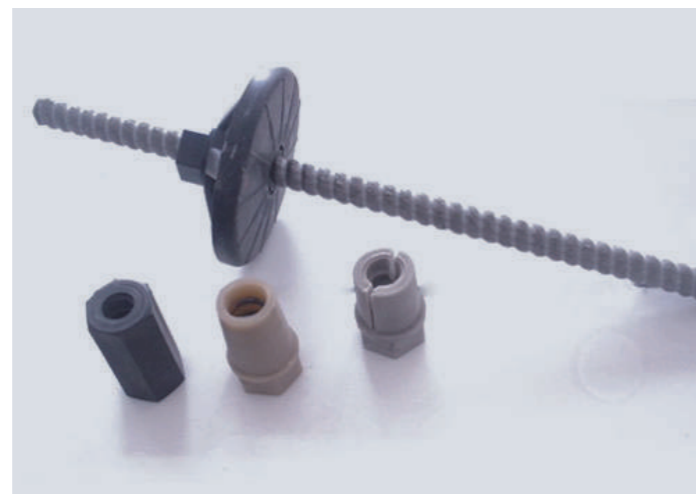
- ◆ Light Weight .
- ◆ High Tensile Strength .
- ◆ Corrosion Resistance .
- ◆ Anti-static Conditioning .
- ◆ Excellent cuttability .
- ◆ No-conductive(electric, thermal) .
- ◆ Flame Resistance .
- ◆ Continuous threaded profile .
- ◆ Flexibility .
- ◆ No electrical conductivity .
- ◆ Wide range of various dimensions

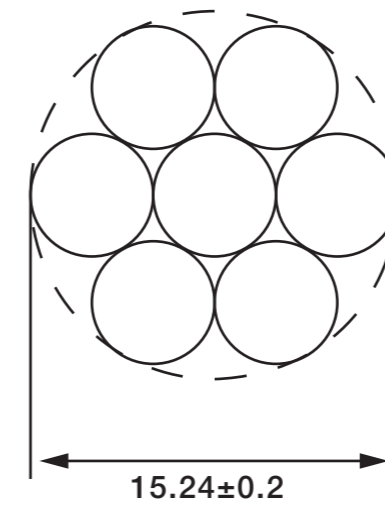
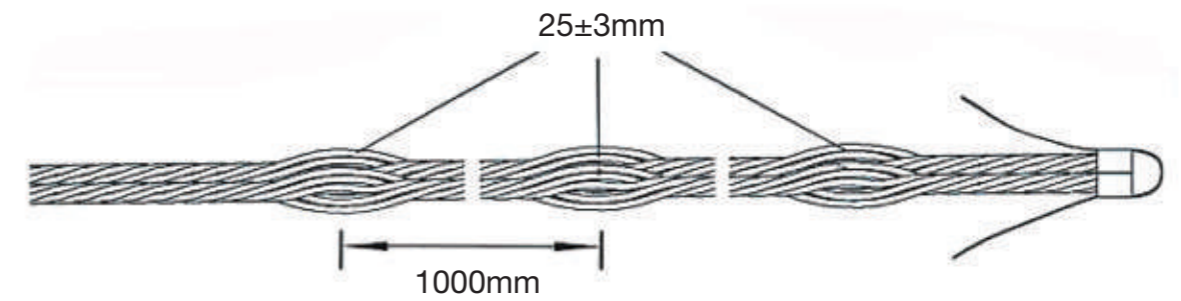
PRODUCT FEATURES

Glass fiber reinforced plastic (GFRP) bolt is formed by high strength glass fiber and resin curing agent through high temperature curing. The whole length of the bolt is thread type, the thread direction is left or right rotation, and the thread distance is generally 10mm round head thread.

After the fiberglass bolt is driven into the rock, under the action of anchoring agent, the fiberglass bolt bolt body is bonded to the surrounding rock mass. Under the interaction between the fiberglass bolt and the surrounding rock mass, the stress state of the surrounding rock is changed, the overall stiffness of the rock mass is improved, and the deformation resistance and bearing capacity of the rock mass are enhanced.

Item	Diameter	16	18	20	22	24	25	27	28	32	36	40
Tensile Load(kN)		140	160	220	240	250	342	400	430	550	600	750
Effective cross section(mm ²)		185	234	289	355	430	441.5	530	553.9	737	960	1163
Tensile Load-FRP Nutthread		40	40	60	60	70	70	70	80	80	100	100
Tensile Load-Steel Nutthread		/	/	80	100	100	120	120	120	150	150	150
Tensile Load-FRP Platethread		40	40	60	60	70	70	70	80	80	100	100
Tensile Strength in core(N/mm ²)		757	684	761	676	581	775	755	776	746	625	645
Tensile E-molulus (N/mm ²)		40GPa										
Double shear strength(MPa)		150MPa										
Strain at failure		2%										
Torsion		/	/	60	70	80	120	130	140	200	280	320
Pitch(P)		10mm right hand										
Weight(g/m)		385	490	590	710	903	930	970	1160	1520	1900	2400
Dia, lop(Da)(mm)		16±0.5	18±0.5	20±0.5	22±0.5	24±0.5	25±0.5	27±0.5	28±0.5	32±0.5	36±0.5	40±0.5
Head Part(60°/90°)		90°										
Length(mm)		±10										
Straightness (mm/mtr)		<3mm										





OVERVIEW

Steel strand is a steel product composed of multiple twisted steel wires, which is widely used in fields such as construction, ships, lifting machinery, and electricity.

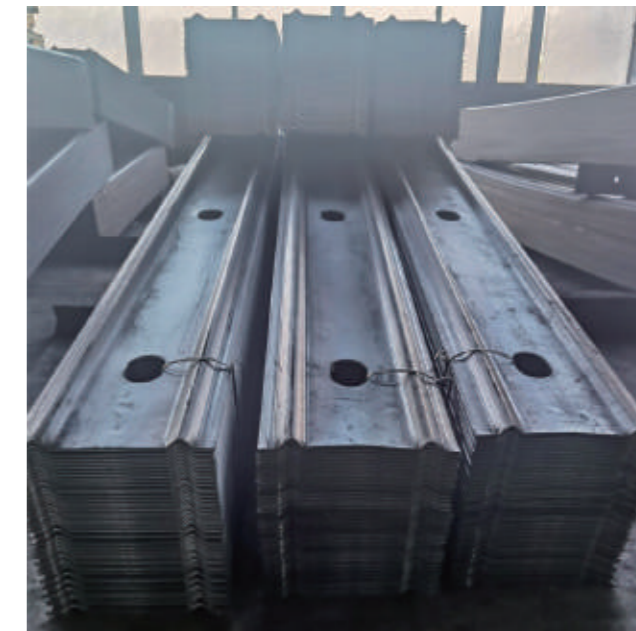
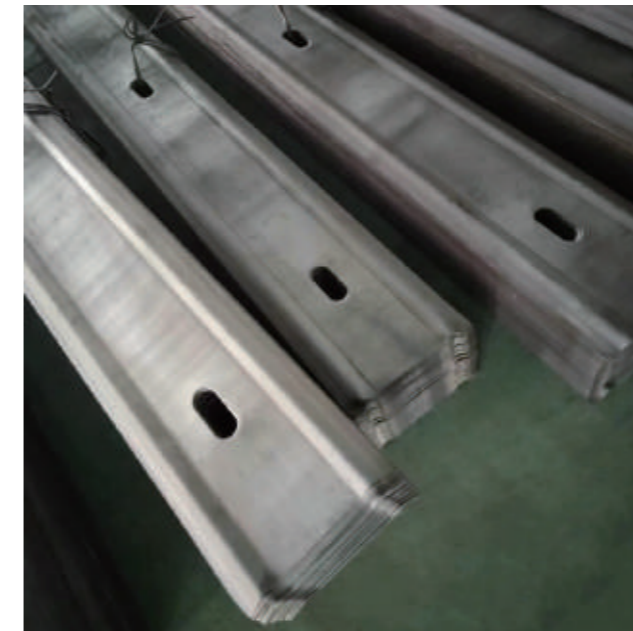
PRODUCT PARAMETERS

Item No.	Diameter	Strand of wire	Weight Kg/m	Max Breaking Load kN	Elongation
ZF15	15.2mm	7	1.1	250	3.5%
ZF18	17.8mm	7	1.5	340	3.5%
ZF19	18.9mm	7	1.7	380	3.5%
ZF216	21.6mm	7	2.2	500	3.5%
ZF218	21.8mm	7	2.4	580	3.5%

Remark :itcanbe made with bulbs, one bulb per meter.

PRODUCT FEATURES

1. High strength and corrosion resistance: Steel strands have extremely high strength and corrosion resistance, which enables them to maintain stable performance in various harsh environments. Whether used as prestressed steel bars in building structures or as conductors in power lines, steel strands can perform excellently.
2. Excellent electrical conductivity: Steel strands have particularly outstanding electrical conductivity in the field of power applications. Compared with steel cored aluminum stranded wires of the same specifications, the measured DC resistance of steel stranded wires has decreased by about 7%, resulting in lower line losses and improved energy transmission efficiency.
3. Low surface reflection coefficient: Steel strand has the characteristic of preventing light pollution, and its wire surface reflects less sunlight, with a reflection coefficient of no more than 32%. This makes it uniquely advantageous in some special situations, such as situations where light pollution needs to be reduced.
4. Good thermal stability: Steel strands have high working temperatures, large current carrying capacity, and strong overload resistance, making them particularly suitable for small span transmission lines in special occasions.



OVERVIEW

Industrial and Engineering Technology Co., Limited supplies W Steel Strap products for mining and tunnel support applications.

Together with rock bolts, the W steel strap helps connect separate anchor points into a stronger support structure, improving stability and support performance in underground mining and tunneling projects.

Our company also supplies different mining support products, including:

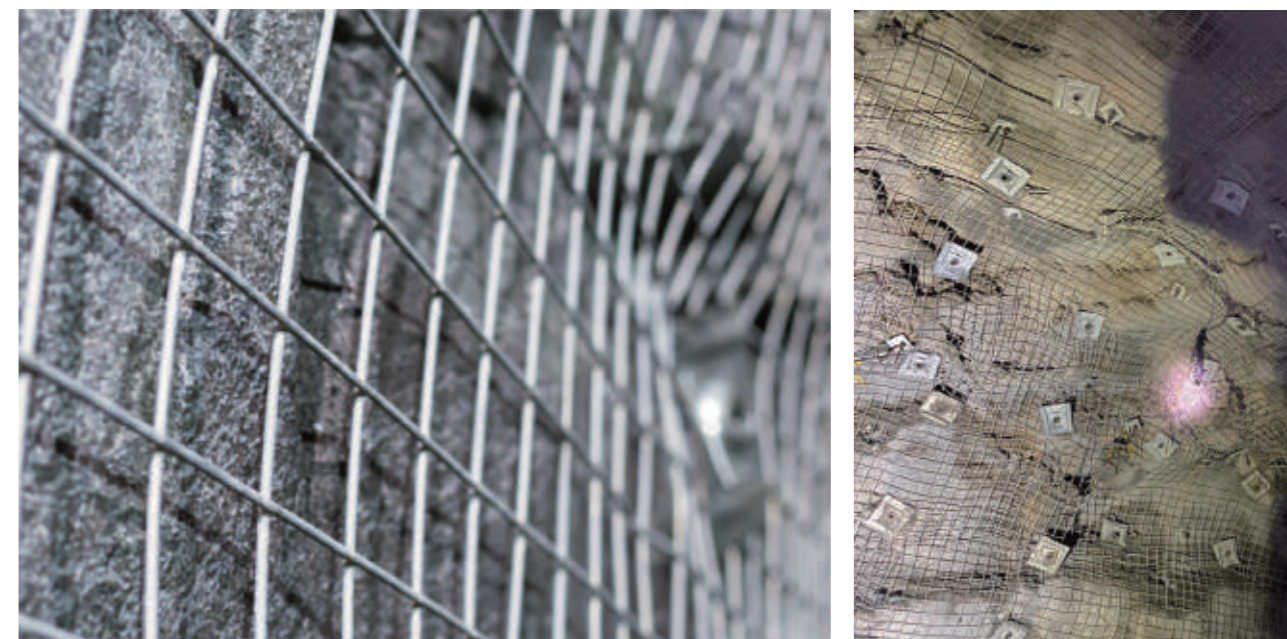
- * Split Set Rock Bolts
- * Threaded Steel Rock Bolts
- * Cable Bolts
- * Welded Wire Mesh
- * Mining Plates
- * Friction Bolts
- * Water Swelling Friction Bolts
- * Underground Support Accessories

Industrial and Engineering Technology Co., Limited provides mining and underground support products for customers worldwide.

PRODUCT FEATURES

1. Improved flexural section modulus: Compared with traditional support materials, the flexural section modulus of W steel strip has increased by 37 times, which means it can better resist bending stress and maintain structural stability.
2. Steel degree improvement: The steel degree of W steel strip has increased by about 70 times, making it more able to withstand external pressure and prevent deformation.
3. Increased tensile strength: During the cold rolling process, the W steel strip undergoes hardening, which increases its tensile strength by 12% to 15% and enhances its ability to withstand tensile stress.
4. Strong combination effect: Due to the high strength and good combination of W steel strip, it can be combined with anchor rods to form a strong support system, effectively supporting and protecting the tunnel wall.
5. High section utilization rate: The section design of W steel strip is reasonable, with high utilization rate, which can fully utilize the material's performance and reduce material waste.
6. Material saving and low price: Due to the high strength and good support effect of W steel strip, its usage can be effectively reduced compared to other support materials, thereby reducing the overall cost.





OVERVIEW

Made of intersection points straight steel bars that are joined by fusion welding at their intersections. There are four types: black, galvanized, straight and corrugated.

Welded wire mesh is made of high-quality low-carbon steel wire, and then cold-plated (electro), hot-dipped, PVC coated.

Hole size and wire diameter are available in a variety of options to meet the diverse needs of customers.

PRODUCT PARAMETERS

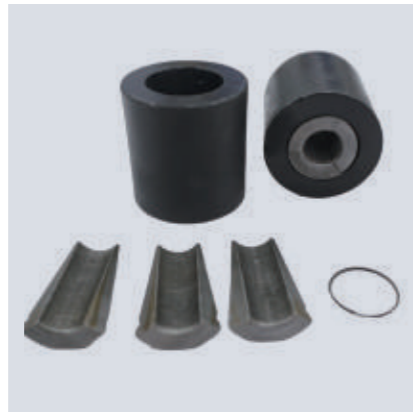
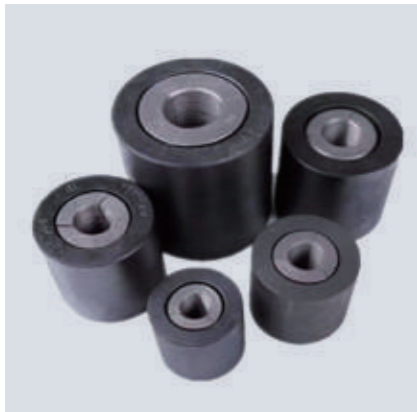
Welded Mesh	Wire Diameter	Aperture	Mesh width	Mesh length
Size	3mm,4mm,5mmn 5mm,6mm 7.8mm,8mm	75*75mm,100*100mm 150*150mm,200*200mm	600mm-3000mm	1 -6meters

Sheet Size (mm)	Wire Diameter (mm)	Mesh Size (mm)	Weight (kg/sheet)
1500 x1200	3.15	100 x 100	2.4
1700 x 1200	4.0	100 x 150	3.6
1700x 1200	4.0	100 x 100	5.4
3000 x 2400	4.0	75 x 50	24.3
1700 x4000	5.6	100 x 100	30.0
3000 x2400	5.6	100 x 100	30.0
3000 x2400	5.6	100 x 100	30.0
4500x1700	5.6	100 x 100	33.0
1700x 1200	5.6	100 x 100	40.0
3000 x 2400	5.6	100 x 100	44.0
1700 x4000	5.6	100 x 100	60.0
3000 x2400	4.0	100 x 100	15.0
3000 x2400	5.6	100 x 100	22.0
4500x1700	5.6	100 x 100	43.0



OVERVIEW

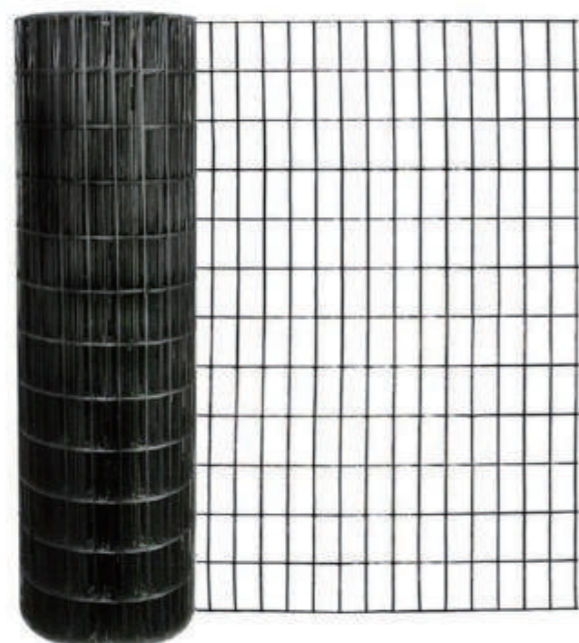
Anchor is an important coal mine roadway support equipment, whose main function is to fix the wall rock of the coal mine roadway, prevent rock loosening, and ensure the stability and safety of the roadway. This equipment is mainly composed of anchor rods, anchor plates, anchoring devices, and protective pipes, and has the characteristics of reasonable structure, convenient installation, and high durability.



MINING NUT



PLASTIC MESH

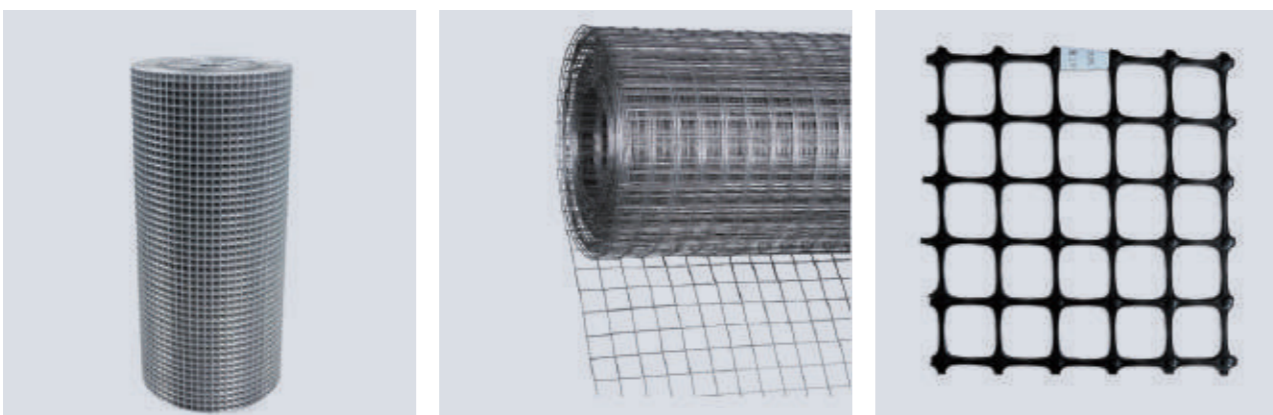


OVERVIEW

Plastic mesh is a lightweight and durable product widely used in construction, agriculture, industry and transportation.

It is available in different mesh sizes, specifications and applications, including protective fencing, covering, screening, isolation and packaging solutions.

The product is easy to transport, install and customize according to customer requirements.



PRODUCT FEATURES

- 1. Price transparency and convenient procurement** Plastic mesh products are cost-effective and easy to purchase, helping customers reduce procurement costs and improve purchasing efficiency.
- 2. Convenient transportation and delivery**
The products are easy to transport and can be delivered quickly to different regions according to customer requirements.
- 3. Complete range of products**
Different sizes, specifications and mesh types are available to meet various industrial and construction applications.
- 4. Stable supply and timely production**
Our company provides stable production capacity and timely delivery to support customer project schedules.
- 5. Wide range of applications**
Plastic mesh is widely used in construction, agriculture, industry and transportation.
It can be used for protective fencing, road barriers, safety protection, covering materials, filtration, screening, isolation and warehouse applications.



QUALITY & CONTROL

For us safety is the most important thing. That is why we offer high quality products, ensuring efficiency, control and tradability.

Our quality and control department ensures that all our products have been manufactured with the highest quality their corresponding certificates and they will achieve their function in the best possible way.

It is not only about to exceed customer expectations, it is all about protect workers in their workplace, increase efficiency and make tunnels and underground mines safer.



DEVICE



**INDUSTRIAL AND ENGINEERING
TECHNOLOGY Co., Limited**
Add: 8 Floor, China Hong Kong Tower,
8-12 Hennessy Road, Wan Chai, Hong Kong
E-mail: business@iet-hongkong.com
Tel./ WhatsApp: +852 5473 6914



QUALITY



ENVIRONMENT